



**Anjuman-I-Islam's  
Institute of Hospitality Management**  
(Affiliated to the University of Mumbai)

92, Dr. Dadabhai Naoroji Road, Opp CSMT, Mumbai - 400 001.  
Tel.: +91 22 2265 2272 / 2270 2997 • Website : [www.anjumanihm.com](http://www.anjumanihm.com)  
E-mail: [principal@anjumanihm.com](mailto:principal@anjumanihm.com) / [rukshana.principal@anjumanihmct.org](mailto:rukshana.principal@anjumanihmct.org)

Details of Add on Courses  
Certificate Course (Online  
Mode) offered by NPTEL,  
Swayam under Academy  
Flexibility

Sr. No	Description
1.	Flyers / Brochure

Principal  
Anjuman-I-Islam's  
Institute of Hospitality Management  
Mumbai-01





**Anjuman-I-Islam's  
Institute of Hospitality Management**  
(Affiliated to the University of Mumbai)

92, Dr. Dadabhai Naoroji Road, Opp CSMT, Mumbai - 400 001.  
Tel.: +91 22 2265 2272 / 2270 2997 • Website : [www.anjumanihm.com](http://www.anjumanihm.com)  
E-mail: [principal@anjumanihm.com](mailto:principal@anjumanihm.com) / [rukshana.principal@anjumanihmct.org](mailto:rukshana.principal@anjumanihmct.org)

---

**2020 - 2021**

**Principal**  
Anjuman-I-Islam's  
Institute of Hospitality Management  
Mumbai-01





**Anjuman-I-Islam's  
Institute of Hospitality Management**  
(Affiliated to the University of Mumbai)

92, Dr. Dadabhai Naoroji Road, Opp CSMT, Mumbai - 400 001.  
Tel.: +91 22 2265 2272 / 2270 2997 • Website : [www.anjumanihm.com](http://www.anjumanihm.com)  
E-mail: [principal@anjumanihm.com](mailto:principal@anjumanihm.com) / [rukshana.principal@anjumanihmct.org](mailto:rukshana.principal@anjumanihmct.org)



**Anjuman-I-Islam's  
Institute of Hospitality Management**

# **BODY LANGUAGE**


## Key to Professional Success

**Prof Rashmi Kaur | IIT Roorkee**

**Conducted By**  
**Ms. Kainaz Dastoor**

**Duration**  
**4 Weeks**

**Mode**  
**Online**

  
**Principal**  
Anjuman-I-Islam's  
Institute of Hospitality Management  
Mumbai-01





**Anjuman-I-Islam's  
Institute of Hospitality Management**  
(Affiliated to the University of Mumbai)

92, Dr. Dadabhai Naoroji Road, Opp CSMT, Mumbai - 400 001.  
Tel.: +91 22 2265 2272 / 2270 2997 • Website : [www.anjumanihm.com](http://www.anjumanihm.com)  
E-mail: [principal@anjumanihm.com](mailto:principal@anjumanihm.com) / [rukshana.principal@anjumanihmct.org](mailto:rukshana.principal@anjumanihmct.org)

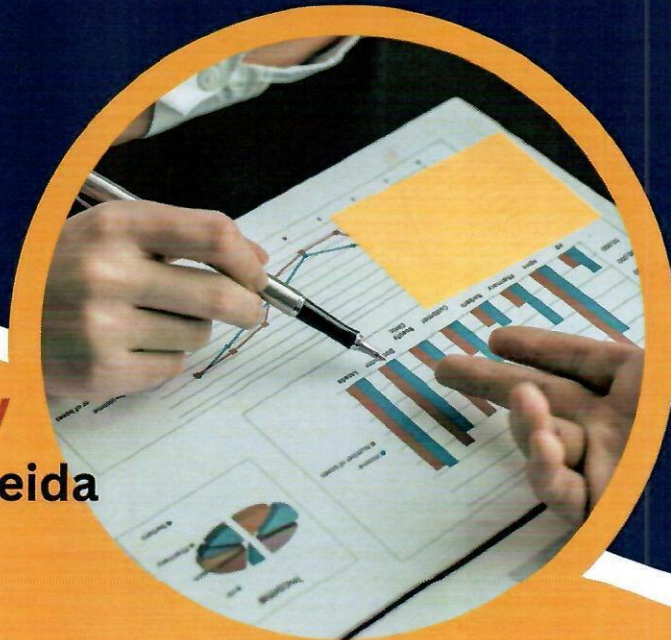


**Anjuman-I-Islam's  
Institute of Hospitality Management**

# E-BUSINESS

Prof. Mamata Jenamani | IIT - Kharagpur

**Mode : Online**



**Conducted By**  
**Dr. Stephan Almeida**

Duration  
12 weeks



*Rukshana*

**Principal**  
Anjuman-I-Islam's  
Institute of Hospitality Management  
Mumbai-01





**Anjuman-I-Islam's  
Institute of Hospitality Management**  
(Affiliated to the University of Mumbai)

92, Dr. Dadabhai Naoroji Road, Opp CSMT, Mumbai - 400 001.  
Tel.: +91 22 2265 2272 / 2270 2997 • Website : [www.anjumanihm.com](http://www.anjumanihm.com)  
E-mail: [principal@anjumanihm.com](mailto:principal@anjumanihm.com) / [rukshana.principal@anjumanihmct.org](mailto:rukshana.principal@anjumanihmct.org)



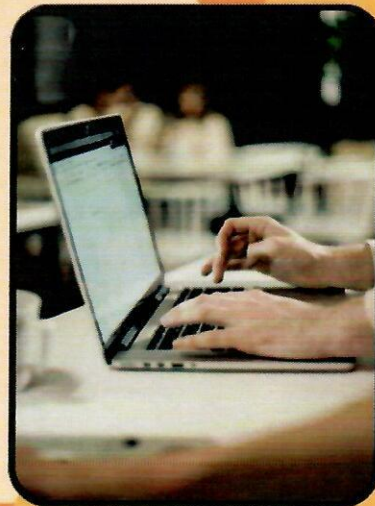
**Anjuman-I-Islam's  
Institute of Hospitality Management**

# INTRODUCTION TO OPERATING SYSTEMS

Prof. Chester Rebeiro | IIT - Madras

**CONDUCTED BY**  
Mr. Manojkumar Barbhai

**DURATION**  
8 WEEKS



**Mode : Online**

*Billimoria*

**Principal**  
Anjuman-I-Islam's  
Institute of Hospitality Management  
Mumbai-01






**Anjuman-I-Islam's  
Institute of Hospitality Management**  
(Affiliated to the University of Mumbai)

92, Dr. Dadabhai Naoroji Road, Opp CSMT, Mumbai - 400 001.  
Tel.: +91 22 2265 2272 / 2270 2997 • Website : [www.anjumanihm.com](http://www.anjumanihm.com)  
E-mail: [principal@anjumanihm.com](mailto:principal@anjumanihm.com) / [rukshana.principal@anjumanihmct.org](mailto:rukshana.principal@anjumanihmct.org)

Anjuman-I-Islam's  
Institute of Hospitality Management

# ADOLESCENT NUTRITION




DR. Hemalatha R | DR.  
Raja Sriswan Mamidi  
ICMR via Swayam

Conducted By  
Ms. Aditi Desai

MODE  
ONLINE

DURATION  
4 WEEKS

  
**Principal**  
Anjuman-I-Islam's  
Institute of Hospitality Management  
Mumbai-01





**Anjuman-I-Islam's  
Institute of Hospitality Management**  
(Affiliated to the University of Mumbai)

92, Dr. Dadabhai Naoroji Road, Opp CSMT, Mumbai - 400 001.  
Tel.: +91 22 2265 2272 / 2270 2997 • Website : [www.anjumanihm.com](http://www.anjumanihm.com)  
E-mail: [principal@anjumanihm.com](mailto:principal@anjumanihm.com) / [rukshana.principal@anjumanihmct.org](mailto:rukshana.principal@anjumanihmct.org)



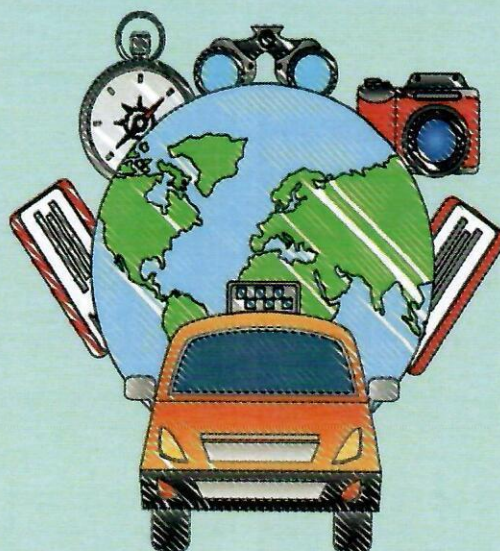
**Anjuman-I-Islam's  
Institute of Hospitality Management**

**FOUNDATION  
COURSE IN TOURISM**

IGNOU Delhi via Swayam

CONDUCTED BY  
Mr. Benny Thomas

Mode  
Online



Duration  
16 Weeks

*Billymore*

Principal  
Anjuman-I-Islam's  
Institute of Hospitality Management  
Mumbai-01





**Anjuman-I-Islam's  
Institute of Hospitality Management**  
(Affiliated to the University of Mumbai)

92, Dr. Dadabhai Naoroji Road, Opp CSMT, Mumbai - 400 001.  
Tel.: +91 22 2265 2272 / 2270 2997 • Website : [www.anjumanihm.com](http://www.anjumanihm.com)  
E-mail: [principal@anjumanihm.com](mailto:principal@anjumanihm.com) / [rukshana.principal@anjumanihmct.org](mailto:rukshana.principal@anjumanihmct.org)



**Anjuman-I-Islam's  
Institute of Hospitality Management**

**TOURISM AND TRAVEL  
MANAGEMENT**

IGNOU Delhi via Swayam by Mr N. Roopesh Kumar

**Conducted By  
Mrs. Sneha Bhandare**

Mode  
ONLINE

**Duration  
ONLINE**



**Principal**  
Anjuman-I-Islam's  
Institute of Hospitality Management  
Mumbai-01







**Anjuman-I-Islam's  
Institute of Hospitality Management**  
(Affiliated to the University of Mumbai)

92, Dr. Dadabhai Naoroji Road, Opp CSMT, Mumbai - 400 001.

Tel.: +91 22 2265 2272 / 2270 2997 • Website : [www.anjumanihm.com](http://www.anjumanihm.com)

E-mail: [principal@anjumanihm.com](mailto:principal@anjumanihm.com) / [rukshana.principal@anjumanihmct.org](mailto:rukshana.principal@anjumanihmct.org)



**ANJUMAN-I-ISLAM'S  
INSTITUTE OF HOSPITALITY  
MANAGEMENT**

# **THERMO DYNAMICS**

**PROF. S.R KALE | IIT - MADRAS & NPTEL**

**Conducted By  
Mr. Edricks Dmello**



**MODE  
ONLINE**

**Duration  
12 WEEKS**

*Billimoria*

**Principal**  
Anjuman-I-Islam's  
Institute of Hospitality Management  
Mumbai-01





**Anjuman-I-Islam's  
Institute of Hospitality Management**  
(Affiliated to the University of Mumbai)

92, Dr. Dadabhai Naoroji Road, Opp CSMT, Mumbai - 400 001.  
Tel.: +91 22 2265 2272 / 2270 2997 • Website : [www.anjumanihm.com](http://www.anjumanihm.com)  
E-mail: [principal@anjumanihm.com](mailto:principal@anjumanihm.com) / [rukshana.principal@anjumanihmct.org](mailto:rukshana.principal@anjumanihmct.org)



**ANJUMAN-I-ISLAM'S  
INSTITUTE OF HOSPITALITY MANAGEMENT**

**ENERGY CONSERVATION  
AND WASTE HEAT  
RECOVERY**

Prof. Prasanta Kumar Das &  
Prof. Anandaroop Bhattacharya  
IIT Kharagpur & NPTEL via Swayam

**Conducted By  
Mrs. Harshali Paul Dadan**



**MODE  
ONLINE**

**Duration  
12 WEEKS**

**Principal**  
Anjuman-I-Islam's  
Institute of Hospitality Management  
Mumbai-01



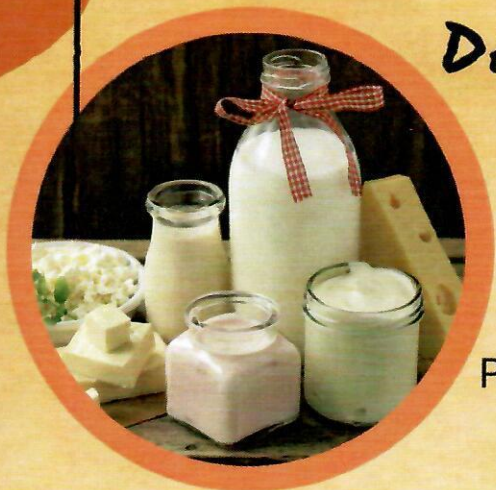


**Anjuman-I-Islam's  
Institute of Hospitality Management**  
(Affiliated to the University of Mumbai)

92, Dr. Dadabhai Naoroji Road, Opp CSMT, Mumbai - 400 001.  
Tel.: +91 22 2265 2272 / 2270 2997 • Website : [www.anjumanihm.com](http://www.anjumanihm.com)  
E-mail: [principal@anjumanihm.com](mailto:principal@anjumanihm.com) / [rukshana.principal@anjumanihmct.org](mailto:rukshana.principal@anjumanihmct.org)



**ANJUMAN-I-ISLAM'S  
INSTITUTE OF HOSPITALITY  
MANAGEMENT**




**DAIRY AND FOOD  
PROCESS AND  
PRODUCTS  
TECHNOLOGY**

Prof. Tridib Kumar Goswami  
IIT Kharagpur, NPTEL via  
Swayam

**CONDUCTED BY  
CHEF EDRICKS DMELLO**

**MODE  
ONLINE**

**Duration  
12 WEEKS**

  
**Principal**  
Anjuman-I-Islam's  
Institute of Hospitality Management  
Mumbai-01





**Anjuman-I-Islam's  
Institute of Hospitality Management**  
(Affiliated to the University of Mumbai)

92, Dr. Dadabhai Naoroji Road, Opp CSMT, Mumbai - 400 001.

Tel.: +91 22 2265 2272 / 2270 2997 • Website : [www.anjumanihm.com](http://www.anjumanihm.com)

E-mail: [principal@anjumanihm.com](mailto:principal@anjumanihm.com) / [rukshana.principal@anjumanihmct.org](mailto:rukshana.principal@anjumanihmct.org)

---

2021 - 22

Principal  
Anjuman-I-Islam's  
Institute of Hospitality Management  
Mumbai-01





**Anjuman-I-Islam's  
Institute of Hospitality Management**  
(Affiliated to the University of Mumbai)

92, Dr. Dadabhai Naoroji Road, Opp CSMT, Mumbai - 400 001.  
Tel.: +91 22 2265 2272 / 2270 2997 • Website : [www.anjumanihm.com](http://www.anjumanihm.com)  
E-mail: [principal@anjumanihm.com](mailto:principal@anjumanihm.com) / [rukshana.principal@anjumanihmct.org](mailto:rukshana.principal@anjumanihmct.org)



**Anjuman-I-Islam's  
Institute of Hospitality Management**

# Soft Skill Development

Prof. Priyadarshi Patnaik,  
Prof. V.N. Giri, Prof. D. Suar  
IIT - Kharagpur and NPTEL via Swayam

Conducted By  
Ms. Kainaz Dastoor

Mode  
Online

Duration  
8 Weeks



**Principal**  
Anjuman-I-Islam's  
Institute of Hospitality Management  
Mumbai-01





**Anjuman-I-Islam's  
Institute of Hospitality Management**  
(Affiliated to the University of Mumbai)

92, Dr. Dadabhai Naoroji Road, Opp CSMT, Mumbai - 400 001.  
Tel.: +91 22 2265 2272 / 2270 2997 • Website : [www.anjumanihm.com](http://www.anjumanihm.com)  
E-mail: [principal@anjumanihm.com](mailto:principal@anjumanihm.com) / [rukshana.principal@anjumanihmct.org](mailto:rukshana.principal@anjumanihmct.org)



**Anjuman-I-Islam's  
Institute of Hospitality Management**

# Corporate Social Responsibility

**Prof. Aradhna Malik**  
IIT - Kharagpur and NPTEL via Swayam

**CONDUCTED BY**  
Mrs. Anjali Chatterton

**MODE  
ONLINE**

**Duration : 8 weeks**

**Principal**  
Anjuman-I-Islam's  
Institute of Hospitality Management  
Mumbai-01





**Anjuman-I-Islam's  
Institute of Hospitality Management**  
(Affiliated to the University of Mumbai)

92, Dr. Dadabhai Naoroji Road, Opp CSMT, Mumbai - 400 001.

Tel.: +91 22 2265 2272 / 2270 2997 • Website : [www.anjumanihm.com](http://www.anjumanihm.com)

E-mail: [principal@anjumanihm.com](mailto:principal@anjumanihm.com) / [rukshana.principal@anjumanihmct.org](mailto:rukshana.principal@anjumanihmct.org)



Anjuman-I-Islam's  
Institute of Hospitality Management

# INTRODUCTION TO INTERNET OF THINGS

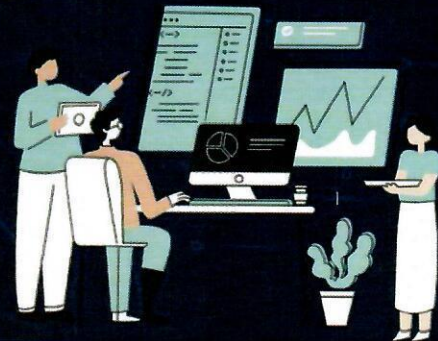
By Prof. Sudip Misra | IIT Kharagpur

Conducted By

***Mrs. Kranti Bhangre***

Duration  
12 WEEKS

MODE  
ONLINE



**Principal**  
Anjuman-I-Islam's  
Institute of Hospitality Management  
Mumbai-01





**Anjuman-I-Islam's  
Institute of Hospitality Management**  
(Affiliated to the University of Mumbai)

92, Dr. Dadabhai Naoroji Road, Opp CSMT, Mumbai - 400 001.  
Tel.: +91 22 2265 2272 / 2270 2997 • Website : [www.anjumanihm.com](http://www.anjumanihm.com)  
E-mail: [principal@anjumanihm.com](mailto:principal@anjumanihm.com) / [rukshana.principal@anjumanihmct.org](mailto:rukshana.principal@anjumanihmct.org)



**Anjuman-I-Islam's  
Institute of Hospitality Management**

# RESEARCH METHODS IN HEALTH PROMOTION

Dr. Arista Lahiri  
Swayam IIT Kharagpur, AIH&PH, Kolkata

Conducted By  
Mr. Edricks Dmello

Mode  
ONLINE

12 WEEKS

**Principal**  
Anjuman-I-Islam's  
Institute of Hospitality Management  
Mumbai-01







**Anjuman-I-Islam's  
Institute of Hospitality Management**  
(Affiliated to the University of Mumbai)

92, Dr. Dadabhai Naoroji Road, Opp CSMT, Mumbai - 400 001.  
Tel.: +91 22 2265 2272 / 2270 2997 • Website : [www.anjumanihm.com](http://www.anjumanihm.com)  
E-mail: [principal@anjumanihm.com](mailto:principal@anjumanihm.com) / [rukshana.principal@anjumanihmct.org](mailto:rukshana.principal@anjumanihmct.org)



**Anjuman-I-Islam's  
Institute of Hospitality  
Management**

**MANAGING  
SERVICES**

Prof. Jayanta Chatterjee  
IIT Kanpur  
Swayam By

Conducted By  
Mrs. Harshali Paul Dadan

**Mode Online**



**Principal**  
Anjuman-I-Islam's  
Institute of Hospitality Management  
Mumbai-01





# Anjuman-I-Islam's Institute of Hospitality Management (Affiliated to the University of Mumbai)

92, Dr. Dadabhai Naoroji Road, Opp CSMT, Mumbai - 400 001.  
Tel.: +91 22 2265 2272 / 2270 2997 • Website : [www.anjumanihm.com](http://www.anjumanihm.com)  
E-mail: [principal@anjumanihm.com](mailto:principal@anjumanihm.com) / [rukshana.principal@anjumanihmct.org](mailto:rukshana.principal@anjumanihmct.org)



## Anjuman-I-Islam's Institute of Hospitality Management

# TOURISM AND MARKETING

Dr. Tangjakhombi Akoijam  
IGNOU via Swayam and NPTEL

CONDUCTED BY  
MR. BENNY THOMAS

Duration  
16 Weeks

MODE - ONLINE



*Benny Thomas*

Principal  
Anjuman-I-Islam's  
Institute of Hospitality Management  
Mumbai-01





# Anjuman-I-Islam's Institute of Hospitality Management (Affiliated to the University of Mumbai)

92, Dr. Dadabhai Naoroji Road, Opp CSMT, Mumbai - 400 001.  
Tel.: +91 22 2265 2272 / 2270 2997 • Website : [www.anjumanihm.com](http://www.anjumanihm.com)  
E-mail: [principal@anjumanihm.com](mailto:principal@anjumanihm.com) / [rukshana.principal@anjumanihmct.org](mailto:rukshana.principal@anjumanihmct.org)



## ANJUMAN-I-ISLAM'S INSTITUTE OF HOSPITALITY MANAGEMENT

### POST HARVEST OPERATIONS AND PROCESSING OF FRUITS, VEGETABLES, SPICES AND PLANTATION CROP PRODUCTS

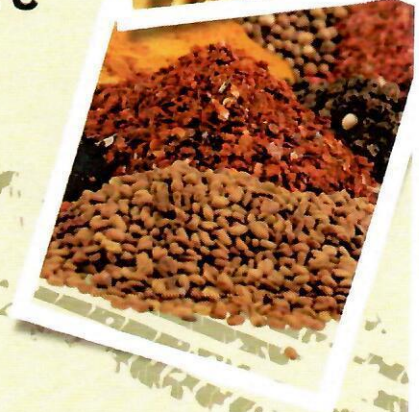
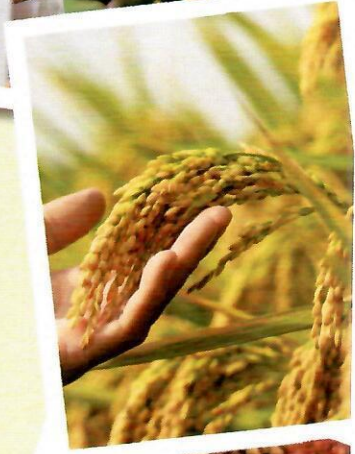
Prof. Hari Niwas Mishra  
IIT Madras and NPTEL via  
Swayam

CONDUCTED BY

**Mrs. Sneha Bhandare**

**MODE  
ONLINE**

**Duration  
12 WEEKS**



*Sneha Bhandare*

Principal  
Anjuman-I-Islam's  
Institute of Hospitality Management  
Mumbai-01





**Anjuman-I-Islam's  
Institute of Hospitality Management**  
(Affiliated to the University of Mumbai)

92, Dr. Dadabhai Naoroji Road, Opp CSMT, Mumbai - 400 001.  
Tel.: +91 22 2265 2272 / 2270 2997 • Website : [www.anjumanihm.com](http://www.anjumanihm.com)  
E-mail: [principal@anjumanihm.com](mailto:principal@anjumanihm.com) / [rukshana.principal@anjumanihmct.org](mailto:rukshana.principal@anjumanihmct.org)



**Anjuman-I-Islam's  
Institute of Hospitality Management**


# FOOD SCIENCE & PROCESSING

BY DR.V.VIJAYA LAKSHMI,  
ENGLISH AND FOREIGN  
LANGUAGES UNIVERSITY,  
HYDERABAD

CONDUCTED BY  
Ms. Aditi Desai

Mode  
Online

Duration  
12 Weeks

  
**Principal**  
Anjuman-I-Islam's  
Institute of Hospitality Management  
Mumbai-01





**Anjuman-I-Islam's  
Institute of Hospitality Management**  
(Affiliated to the University of Mumbai)

92, Dr. Dadabhai Naoroji Road, Opp CSMT, Mumbai - 400 001.  
Tel.: +91 22 2265 2272 / 2270 2997 • Website : [www.anjumanihm.com](http://www.anjumanihm.com)  
E-mail: [principal@anjumanihm.com](mailto:principal@anjumanihm.com) / [rukshana.principal@anjumanihmct.org](mailto:rukshana.principal@anjumanihmct.org)



**ANJUMAN-I-ISLAM'S  
INSTITUTE OF HOSPITALITY  
MANAGEMENT**

# **RESEARCH METHODOLOGY**

Prof. G.S.Bajpai  
National Law University Delhi  
and CEC via SwayaM

**CONDUCTED BY  
Dr. Stephan Almeida**

**DURATION : 12 WEEKS**

**MODE  
ONLINE**



*Rukshana*

**Principal**  
Anjuman-I-Islam's  
Institute of Hospitality Management  
Mumbai-01





**Anjuman-I-Islam's  
Institute of Hospitality Management**  
(Affiliated to the University of Mumbai)

92, Dr. Dadabhai Naoroji Road, Opp CSMT, Mumbai - 400 001.

Tel.: +91 22 2265 2272 / 2270 2997 • Website : [www.anjumanihm.com](http://www.anjumanihm.com)

E-mail: [principal@anjumanihm.com](mailto:principal@anjumanihm.com) / [rukshana.principal@anjumanihmct.org](mailto:rukshana.principal@anjumanihmct.org)

---

**2021 - 22**

**Principal**  
Anjuman-I-Islam's  
Institute of Hospitality Management  
Mumbai-01





**Anjuman-I-Islam's  
Institute of Hospitality Management**  
(Affiliated to the University of Mumbai)

92, Dr. Dadabhai Naoroji Road, Opp CSMT, Mumbai - 400 001.  
Tel.: +91 22 2265 2272 / 2270 2997 • Website : [www.anjumanihm.com](http://www.anjumanihm.com)  
E-mail: [principal@anjumanihm.com](mailto:principal@anjumanihm.com) / [rukshana.principal@anjumanihmct.org](mailto:rukshana.principal@anjumanihmct.org)



**Anjuman-I-Islam's  
Institute of Hospitality Management**

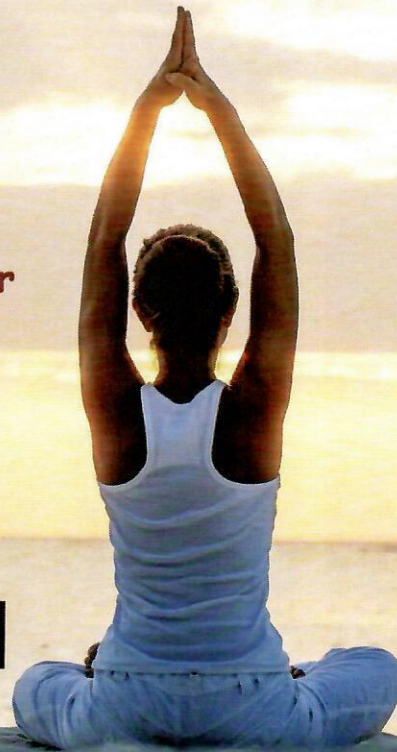
**YOGA AND POSITIVE PSYCHOLOGY  
FOR MANAGING CAREER AND LIFE**

Prof. Ashish Pandey | IIT Bombay  
NPTEL via Swayam

Conducted By  
Ms. Kainaz Dastoor

**Mode Online**

**Duration : 8 Weeks**



*Rukshana*

Principal  
Anjuman-I-Islam's  
Institute of Hospitality Management  
Mumbai-01





**Anjuman-I-Islam's  
Institute of Hospitality Management**  
(Affiliated to the University of Mumbai)

92, Dr. Dadabhai Naoroji Road, Opp CSMT, Mumbai - 400 001.  
Tel.: +91 22 2265 2272 / 2270 2997 • Website : [www.anjumanihm.com](http://www.anjumanihm.com)  
E-mail: [principal@anjumanihm.com](mailto:principal@anjumanihm.com) / [rukshana.principal@anjumanihmct.org](mailto:rukshana.principal@anjumanihmct.org)



**Anjuman-I-Islam's  
Institute of Hospitality Management**

**ARTIFICIAL INTELLIGENCE  
SEARCH METHOD FOR  
PROBLEM SOLVING**

Prof. Deepak Khemani | IIT Madras  
NPTEL via Swayam

**Conducted By  
Mrs. Kranti Bhangre**

**12 weeks**

**Mode : Online**

*Kranti Bhangre*

**Principal**  
Anjuman-I-Islam's  
Institute of Hospitality Management  
Mumbai-01







**Anjuman-I-Islam's  
Institute of Hospitality Management**  
(Affiliated to the University of Mumbai)

92, Dr. Dadabhai Naoroji Road, Opp CSMT, Mumbai - 400 001.  
Tel.: +91 22 2265 2272 / 2270 2997 • Website : [www.anjumanihm.com](http://www.anjumanihm.com)  
E-mail: [principal@anjumanihm.com](mailto:principal@anjumanihm.com) / [rukshana.principal@anjumanihmct.org](mailto:rukshana.principal@anjumanihmct.org)



**Anjuman-I-Islam's  
Institute of Hospitality Management**

# HUMAN RESOURCES DEVELOPMENT

Prof. Kailash B L Srivastava  
IIT - Kharagpur and NPTEL via Swayam

Conducted by  
Mrs. Sneha Bhandare

**Mode  
Online**

**Duration  
12 Weeks**

**Principal**  
Anjuman-I-Islam's  
Institute of Hospitality Management  
Mumbai-01





**Anjuman-I-Islam's  
Institute of Hospitality Management**  
(Affiliated to the University of Mumbai)

92, Dr. Dadabhai Naoroji Road, Opp CSMT, Mumbai - 400 001.  
Tel.: +91 22 2265 2272 / 2270 2997 • Website : [www.anjumanihm.com](http://www.anjumanihm.com)  
E-mail: [principal@anjumanihm.com](mailto:principal@anjumanihm.com) / [rukshana.principal@anjumanihmct.org](mailto:rukshana.principal@anjumanihmct.org)



**ANJUMAN-I-ISLAM'S INSTITUTE OF  
HOSPITALITY MANAGEMENT**

**THE SCIENCE OF  
HAPPINESS AND  
WELLBEING**

**Prof. Priyadarshi Patnaik &  
Prof. Manas K. Mandal**  
IIT Kharagpur,  
Swayam and NPTEL

**Conducted By  
Mr. Benny Thomas**

**Duration  
8 weeks**

**Mode  
Online**

**Principal**  
Anjuman-I-Islam's  
Institute of Hospitality Management  
Mumbai-01





**Anjuman-I-Islam's  
Institute of Hospitality Management**  
(Affiliated to the University of Mumbai)

92, Dr. Dadabhai Naoroji Road, Opp CSMT, Mumbai - 400 001.  
Tel.: +91 22 2265 2272 / 2270 2997 • Website : [www.anjumanihm.com](http://www.anjumanihm.com)  
E-mail: [principal@anjumanihm.com](mailto:principal@anjumanihm.com) / [rukshana.principal@anjumanihmct.org](mailto:rukshana.principal@anjumanihmct.org)



**ANJUMAN-I-ISLAM'S INSTITUTE OF  
HOSPITALITY MANAGEMENT**

**MUSHROOM PRODUCTION**

**Dr Neelima Pant**  
**NIOS Swayam and NPTEL**

**Conducted By**  
**Ms. Aditi Desai**

**Duration**  
**24 weeks**

**Mode : Online**



*Handwritten signature*

**Principal**  
Anjuman-I-Islam's  
Institute of Hospitality Management  
Mumbai-01





**Anjuman-I-Islam's  
Institute of Hospitality Management**  
(Affiliated to the University of Mumbai)

92, Dr. Dadabhai Naoroji Road, Opp CSMT, Mumbai - 400 001.  
Tel.: +91 22 2265 2272 / 2270 2997 • Website : [www.anjumanihm.com](http://www.anjumanihm.com)  
E-mail: [principal@anjumanihm.com](mailto:principal@anjumanihm.com) / [rukshana.principal@anjumanihmct.org](mailto:rukshana.principal@anjumanihmct.org)



**ANJUMAN-I-ISLAM'S  
INSTITUTE OF HOSPITALITY MANAGEMENT**

# UNCOMMON SENSE TEACHING

NPTEL, UGC and Swayam By  
Barbara Oakley

CONDUCTED BY  
Dr. Stephan Almeida

**MODE  
ONLINE**

**8 weeks**




**Principal**  
Anjuman-I-Islam's  
Institute of Hospitality Management  
Mumbai-01





**Anjuman-I-Islam's  
Institute of Hospitality Management**  
(Affiliated to the University of Mumbai)

92, Dr. Dadabhai Naoroji Road, Opp CSMT, Mumbai - 400 001.  
Tel.: +91 22 2265 2272 / 2270 2997 • Website : [www.anjumanihm.com](http://www.anjumanihm.com)  
E-mail: [principal@anjumanihm.com](mailto:principal@anjumanihm.com) / [rukshana.principal@anjumanihmct.org](mailto:rukshana.principal@anjumanihmct.org)

 **Anjuman-I-Islam's  
Institute of Hospitality Management**

**Health Research Fundamentals**

**Dr. Sanjay Mehandale  
Dr. Pradeep Kaur**  
National Institute of  
Epidemiology and NPTEL  
via Swayam

**Conducted By  
Mrs. Vinitha Raghuram**

**Duration  
8 weeks**                      **Mode : Online**



**Principal**  
Anjuman-I-Islam's  
Institute of Hospitality Management  
Mumbai-01





**Anjuman-I-Islam's  
Institute of Hospitality Management**  
(Affiliated to the University of Mumbai)

92, Dr. Dadabhai Naoroji Road, Opp CSMT, Mumbai - 400 001.  
Tel.: +91 22 2265 2272 / 2270 2997 • Website : [www.anjumanihm.com](http://www.anjumanihm.com)  
E-mail: [principal@anjumanihm.com](mailto:principal@anjumanihm.com) / [rukshana.principal@anjumanihmct.org](mailto:rukshana.principal@anjumanihmct.org)



Anjuman-I-Islam's  
Institute of Hospitality Management

**BASICS OF HEALTH  
PROMOTION AND  
EDUCATION INTERVENTION**

Prof. Arista Lahiri, Prof. Sweety Suman Jha,  
Prof. Madumita Dobe, Prof. Chandrashekhar Taklikar  
+ + IIT Kharagpur and NPTEL via Swayam  
+

Conducted By  
Mr. Edricks Dmello

12 weeks  
Mode : Online

**Principal**  
Anjuman-I-Islam's  
Institute of Hospitality Management  
Mumbai-01





**Anjuman-I-Islam's  
Institute of Hospitality Management**  
(Affiliated to the University of Mumbai)

92, Dr. Dadabhai Naoroji Road, Opp CSMT, Mumbai - 400 001.  
Tel.: +91 22 2265 2272 / 2270 2997 • Website : [www.anjumanihm.com](http://www.anjumanihm.com)  
E-mail: [principal@anjumanihm.com](mailto:principal@anjumanihm.com) / [rukshana.principal@anjumanihmct.org](mailto:rukshana.principal@anjumanihmct.org)



**Anjuman-I-Islam's  
Institute of Hospitality Management**

# ENTREPRENEURSHIP

Prof. Meeta Nihalini | IIT Madras  
NPTEL via Swayam

Conducted By  
Dr. Stephan Almeida



12 weeks

Mode : Online

*Ballmouc*

**Principal**  
Anjuman-I-Islam's  
Institute of Hospitality Management  
Mumbai-01

